

# Northwest Woodturners



A Chapter of The American Association of Woodturners

Volume 21, Issue 3

The woodturners' local resource

March 2016

## PRESIDENT'S MESSAGE

Okay, perhaps my call for participation was a bit too subtle. We need a board member to replace Steve Newberry (he's done good service and has earned a break) and we need someone to volunteer for the vice president's job.

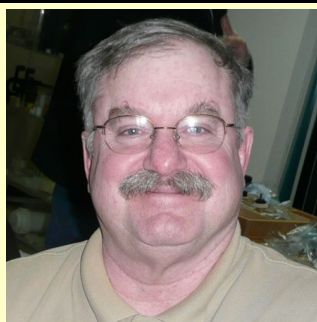
Being a board member means getting to meetings early enough to attend the board meeting, usually beginning around 6:30 PM and lasting at the most 20 minutes. The board members, also known as members-at-large, are there to represent the voice of club members not occupying elected positions (president, vice president, treasurer etc.). The members-at-large are essential elements in the governance of the club. The selected officers all have prescribed duties. The rest of the board represents the view of the rest of the club on matters of policy and direction. We need at least one now.

The vice president has traditionally been the program director for Northwest Woodturners. Yes, it's a big job. Yes, it's an important job. The nature of the position has changed in that now there are people willing to assist the vice president in securing demonstrators. In the past, it was a solo job. As it is now, 2016 is partly done. The new vice president will be largely concerned with filling the 2017 demonstration calendar. We need one now.

This month we mark the return of what used to be a fairly common occurrence at Northwest Wood Turner's. The rotating demonstration, as it has come to be called, is an evening with multiple turners at many multiple stations demonstrating different topics. The demonstration is actually driven by those watching it. What would you like to see? That's why we posed the question last month to get a feel for topics. Since Dale pretty well covered bowl turning last month (although bowl turning questions are certainly not out of order) we've put together a collection of non-bowl turning topics to get things started.

Bill Giffin will set up a table dedicated to surface augmentation: dying, piercing, carving, gilding, and all the other interesting things he does. Basically, a miniature visit to his recent large demonstration. Roger Crooks will have a station set up demonstrating the stone inlay technique he learned from Stephen Hatcher. Members will be able to try out different rotary tools for

*(continued on next page)*



## CLUB INFO

### Northwest Woodturners

[www.northwestwoodturners.com](http://www.northwestwoodturners.com)

Meetings are held at 7:00PM on the 1st Thursday of each month at The Multnomah Arts Center 7688 SW Capitol Hwy, Portland, OR 97219

### President

Mike Meredith  
mmeredith23@comcast.net  
503-522-0531

### Vice President

### Secretary

Jim Schoeffel

### Treasurer

Roger Crooks

### Directors

Barbara Hall  
Richard Hall

### Librarians

Denvy Larson &  
Lynne Hemmert

### Raffle

Tom Willing

### Supplies

Roger Crooks

### Newsletter Editor

Jim Schoeffel  
jschoeffel@aol.com  
503-591-9066

### NWWT Web Site

Barbara Hall

**PRESIDENT'S MESSAGE (CONTINUED)**

carving the inlay including Dremel tools, Foredom flex shaft carver, and micromotor carver. Roger will also have a vacuum chuck setup where you can see one way to build one. Tom Willing will be at the lathe to demonstrate box turning, sharpening, jam chucking and pretty much anything else you'd like to see. I will have another lathe dealing with spindle turning, that tedious bead/cove/flat methodology that is, after all, the basis of all wood turning. We can also take some time to talk about the skew chisel, one of my favorite tools though I know that's a view not shared by all woodturners. I'll also have my lathe-mounted sharpening system going to demonstrate that there's always another way to do things. We can also talk about jam chucking (the most commonly mentioned topic in our survey), boxes, bowls, pepper mills, or whatever you'd like to see.

If you have a topic you would like to see covered somewhere in this three-ring circus, send me or the appropriate demonstrator an email and we'll try to make sure it gets included.

Since last month's Challenge and Show-n-Tell were pushed forward to this month, we can look forward to a large collection of pieces to enjoy, as well as another outstanding raffle. I hope all of you will take a minute to look over the financial statement Roger has provided for us this month. It's interesting where the money comes from and more importantly where the money goes. I hope you'll agree that Roger has been an outstanding steward of our finances.

See you in March.

— Mike

**2015 NWWT FINANCIALS**

This was a good year for NWWT. As Mike said, over the last two years NWWT has found a great home, started up teaching again, revitalized the company store, have a monthly raffle with good wood, brought in great demonstrators, and at the same time, strengthened our financial position.

At the end of the year we had \$4500 in the bank and, on the books, we broke even for the year, but actually we are up about \$1000 since we paid in advance for the next two years of internet (saving significant dollars).

Income	Percentage
Membership Dues	55%
Auction	30%
Classes	0%
Raffle & Store	15%
Expenses	Percentage
Meetings	45%
Internet	25% (see Note 1)
Library	10%
Insurance	15%
Equipment	5%
Note 1: Includes payment for 2016 & 2017	

*(continued on next page)*

## 2015 NWWT FINANCIALS (CONTINUED)

### Analysis

**Membership Dues** - 55% of our income. Basically pays for our monthly meeting demos, room and equipment storage, and our library.

**Annual Auction** - about 30% of our income. Basically pays for running the club and gives us a buffer for bringing in outside demonstrators.

**Raffle and Store** - about 15% of our income. Pays for our insurance.

**Classes** - break even but that is because our first demo (Derek Weidman) lost a lot of money that the remaining classes made up.

### 2016

In 2016 we need to put our focus on education with both internal and external classes. These bring in good revenue and fulfill our charter, so if you can help in this area, let Mike or me know. The Raffle is a very important revenue source because the Store is run as a membership benefit and is essentially break even. And of course, our Annual Auction keeps gas in the gas tank, so your participation is extremely important.

— Roger Crooks, Treasurer

## LIBRARY NEWS

The month will be March, so march right into your shop and segment something! Ok, never segmented something? Or, don't want to segment something? That is OK. At the February meeting, I found a fantastic DVD (Segmented Polychromatic Vases and Urns) with Don Russell & Ron Brown, run time 4 hours 33 minutes, on three DVD's. What an action packed trio! I was impressed. I learned a lot. The instructions are fantastic. One DVD has plans that will print off from the computer, so you can take the instructions with you into the shop. The center feature rings have clear instructions, and what he does is build blocks and put wedges between the blocks so the inside and outside do not distort. I am impressed, but it's easy for me to get that way. I started turning at age 59, am now 69! Wow, where did the time zip off to? Making chess sets, kaleidoscopes, tops, bowls with natural edges, segmented....everything! I like to make a stack of strips 24 inches long with a hole in the middle, chop that on the chop saw, glue them up and turn pepper mills. I spin the pieces so the mills look twisted and cool. I shall bring my stuff to the next meeting. I did not yet build anything, the way the DVD instructed, but tomorrow is another day! Hope to see you and something you turned at the March meeting. Turn safe, and have fun.

— Denvy Larson, Assistant Librarian

### Members,

***The library has way too many DVD's outstanding for more than two (2) months! Please check all your DVD's and bring back to the next meeting the ones you borrowed from NWWT along with any NWWT books. Last meeting I pulled the "C" file of the checked out items which gives the dates when they were checked out. Some were checked out as far back as 2014! Bring back the clubs property!***

— Lynne Hemmert, Librarian

## SELECTION OF OFFICERS AND DIRECTORS

At the February meeting Mike Meredith, Roger Crooks, and Jim Schoeffel agreed to another year as President, Treasurer, and Secretary, respectively. The position of Vice President is currently open and a Board member to replace Steve Newberry is being sought. Please consider volunteering for one of these very important club positions.

## MARCH PROGRAM — ROTATING DEMOS

This month we are bringing back an old NWWT tradition – rotating demos. You will have a chance to see and talk with the demonstrators about many different techniques, including:

- Spindle Turning, Sharpening, and using the Skew Chisel by Mike Meredith
- Making Boxes, Jam Chucks and Sharpening by Tom Willing
- Surface Augmentation: Dying, Carving, & Gilding by Bill Giffin
- Inlays and Carving; try out different tools for carving (Dremel, Foredom, Micromotor tools) by Roger Crooks

## APRIL PROGRAM — TERRY GERROS — Making Twists on the Lathe

Terry Gerros, Vice President of Willamette Valley Woodturners in Salem and Chairman of the 2015 Oregon Woodturning Symposium last year, will demonstrate the process of cutting twists on the lathe. He will:

- Provide an explanation of the twist language and how to understand the marking -out process.
- Show the proper way to mark out a twist to simplify cutting it.
- Demonstrate the process of cutting twists with both hand and power tools.

This demo is not to produce a finished piece, but rather show how simple it is to cut a twist, so you can try it out at home. A handout on the process will be available.



**FEBRUARY PROGRAM — DALE LARSON, “From Tree to Bowl”**

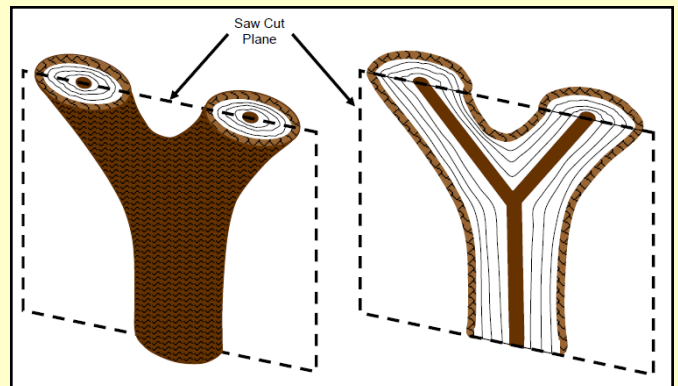
Dale Larson, an internationally known woodturner, and a member of NWWT, a founding member of Cascade Woodturners, and the immediate past president of AAW was the featured demonstrator at our February meeting. Dale's work is both functional and beautiful, and much admired by collectors and wood workers alike. His bowls can be found in private collections all over the world.

Dale's “From Tree to Bowl” process is quite straight forward: select a tree, bring it down, cut it into smaller pieces, cut bowl blanks from the pieces, rough-turn the bowls, seal all end grain, let the rough blanks dry slowly to avoid cracking, then finish turn the bowls. However, knowing and following the details in each of these steps is what leads to the beautiful bowls with striking figure that Dale is known for. Dale's presentation focused on the details of how to harvest a tree and produce bowl blanks with attractive figure.

Using slides, flip charts and a handout (“Cutting a Tree for Figure”) Dale showed how he takes down a tree to minimize damage to areas that will yield bowls with good figure. His method is to limb the tree first, then fall it so it lands clear of any obstacles on the ground or on long, branch stubs left on the trunk. Then he explained the locations and orientations for cutting bowl blanks from the tree to produce different figure. The illustrations at the top of his handout (#1-#4) on the next page show four different positions and orientations bowls can be made from straight-grain sections of a tree, and the figure to expect in the finished bowl.

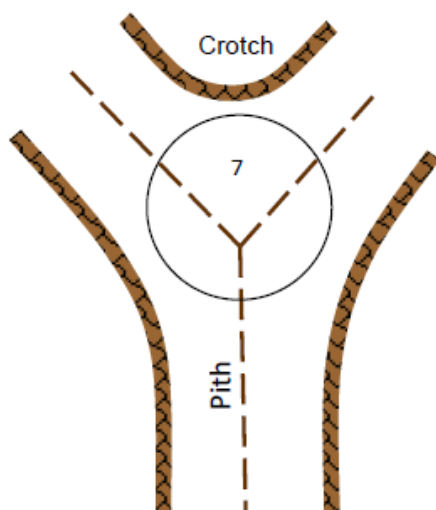
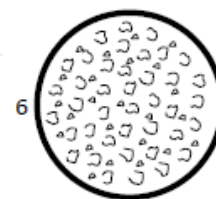
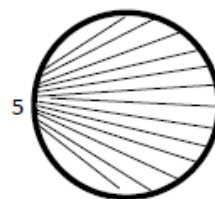
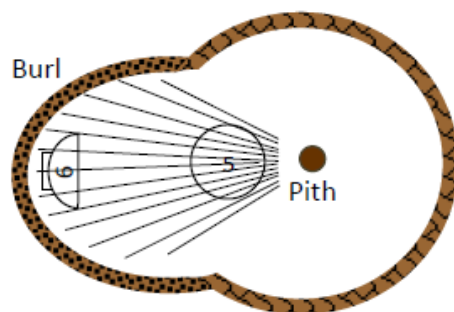
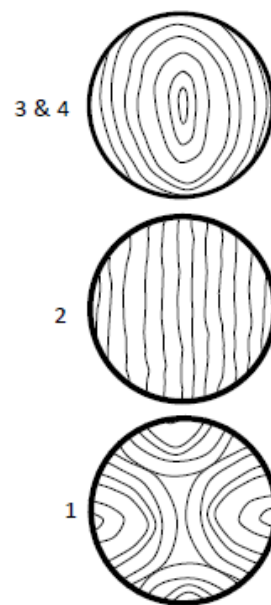
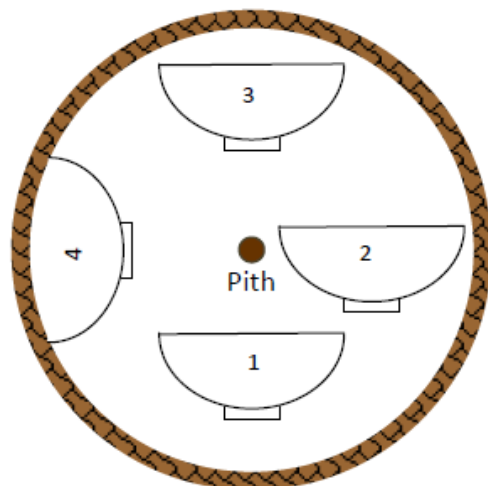
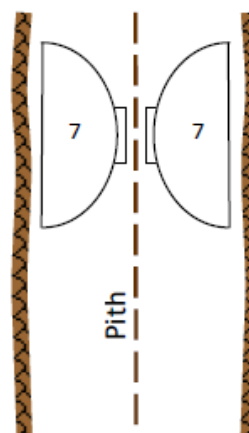
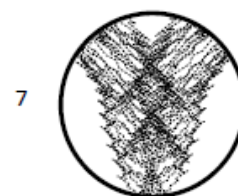
Burl is an abnormal growth on a tree and contains, generally, grain rays radiating from the pith of the tree's trunk. Depending on the orientation of the bowl relative to these rays, it will have a radial figure or a spotted/curlicue figure as shown in the illustrations near the center of the handout (#5-#6).

Feather is another popular figure for bowls and platters and is obtained from the crotch formed by the trunk and two branches as shown in illustrations at the bottom of the handout (#7). To obtain this figure requires the crotch piece to be cut in half along all the piths (see illustration at right). This is not a particularly easy cut to make, but yields two pieces with feather. To make this difficult cut, Dale first marks a line on the bark of the crotch piece connecting all the piths, props the piece nearly vertical, and then uses the marks connecting the piths as a guide for the chain saw.



As soon as possible after harvesting the tree, Dale cuts out the bowl blanks, rough turns them into bowl shapes about an inch thick, seals the end grain, and then lets them dry slowly. After the bowl blanks are dry, he turns them into the desired shape and finishes them with walnut oil, which he demonstrated for us.



**FEBRUARY PROGRAM — DALE LARSON (CONTINUED)****Cutting a Tree for Figure by Dale Larson****Sideview****Feather Pattern**

**WORK by DALE LARSON**

Big Leaf Maple 11-1/2" dia. x 6-1/2" high



Cherry, 12-5/8" dia. x 5" high



Madrone, 14" dia. x 6" high





**WORK by DALE LARSON (CONTINUED)**

Oval Bowl, Madrone,  
14-1/2" x 10-1/2" x 5" high





**WORK by DALE LARSON (CONTINUED)**

Threaded Sphere, 3-1/2" dia.



Salt & Pepper Shakers  
with Threaded Tops, 3" dia.



Madrone Hollow Sphere, 4-3/4" dia.



**FEBRUARY SHOW-n-TELL AND CHALLENGE**

The February Show-n-Tell and Challenge were both postponed to the March meeting. We will have two Challenge categories: Segmented Pieces (from February) and Multi-Axis Pieces

**TURNIN' N LEARNIN' — CHAPTER 2 by Mike Porter**

I had the great fortune in February to attend the demo and one-day class conducted by Ashley Harwood as sponsored by the Cascade Club. Thanks to Skip Burke of Cascade, our Mike Meredith, and all the folks who made the sessions work. The folks in our club who recommended her instruction were certainly right on. As someone with a long background in training in the corporate world, I can say that as a teacher she does a lot of things right, but let's get to what I think I learned that might be of benefit to you.

Here are a few gems I picked up from her class. Please note that seeing these in action is everything and my wording may or may not be clear.

- How the tool is ground determines how you present it to the wood. Ashley uses the 40-40 grind exclusively on her bowl gouge (bottom gouge excepted), and this is her tool for most of her work.
- How the feet are placed before you start the cut is important. If the cut is parallel as in spindle roughing to round, the feet are in line with the tool rest, which is parallel to the wood. If the cut is a bowl outside, the left foot is placed about where it needs to be at the end of the cut, right foot back carrying your weight initially; your weight will shift during the cut. These are just two common examples.
- The left hand is mostly used to hold the tool down to the rest to avoid bouncing or skipping as the nose of the bevel enters the wood. The right hand is where the power comes from; it pushes and steers. The tool cuts and goes where the nose is pointed...fancy that, now! That was worth the price of admission for me!
- When you're going to turn a bowl, sketch out its profile on paper first; don't just make it up as you go. She has a sketchbook for this purpose from her art school training. Plan out your cuts this way. Think it through. How will you cut it? In what sequence? How will you sand it?

There were many more, but would require illustrations to really get the point across. She spent a lot of time with us on sharpening and why your grinder needs to be on a stand and mounted on the bench, on how to cut a recess with a correct dovetail to seat the chuck jaws, on using a bottom bowl gouge correctly, as a few examples.

What I also enjoyed very much was meeting turners from all three area clubs. We shared our ups and downs in learning. I polled a number of folks about lathes they liked and why, and the same for tools. I came home with a shopping list! Don't we all have that list?

I leave you now with a request for what you are interested in seeing in this newsletter. A couple of ideas for you to think about: the tool you could not do without; your most valuable learning lesson as a beginner, or as a long time turner; what not to do EVER!

Shoot me an email at [tmikeporter@gmail.com](mailto:tmikeporter@gmail.com). Thanks and good turning and learning to y'all.

## "FROM THE ROOTS UP"

Lake Area Artists, celebrating their 50th year as an arts organization in Northwestern Oregon, and the Pacific Northwest Woodturning Guild, with the generous support of the Arts Council of Lake Oswego, are pleased to present a gallery experience titled "From the Roots Up".

Using the primary source of our wood and fiber materials as its central theme, the show is a thoughtful reflection on the role of art and artists in the Pacific Northwest community. The show will feature 16 members of Lake Area Artists working in oils, watercolor, encaustic, pastels, and acrylics. Eight members of Pacific Northwest Woodturning Guild will show fine woodturnings.

We cordially invite you to attend the show. We would be grateful to those who help us spread the word.

Tom Willing, President  
Pacific Northwest  
Woodturning Guild



*Bloom Where You've Planted* by  
Susan Greenbaum  
*Pierced Bowl* by Kathleen Duncan  
*Old Soul* by Mary Burgess  
(images from top to bottom)



## *From the Roots Up*

March 4–25, 2016

Featuring artwork from the  
Lake Area Artists &  
Pacific Northwest Woodturning Guild

Opening Reception: Friday, March 4, 5–7 PM

Gallery Hours: Tues–Fri, 11 AM–4 PM

510 Museum & ARTspace

510 1st Street

Lake Oswego, OR 97034

Organized and curated by the  
Arts Council of Lake Oswego

[www.artscouncillo.org](http://www.artscouncillo.org)





## NORTHWEST WOODTURNERS MEETING SCHEDULE AND PROGRAMS

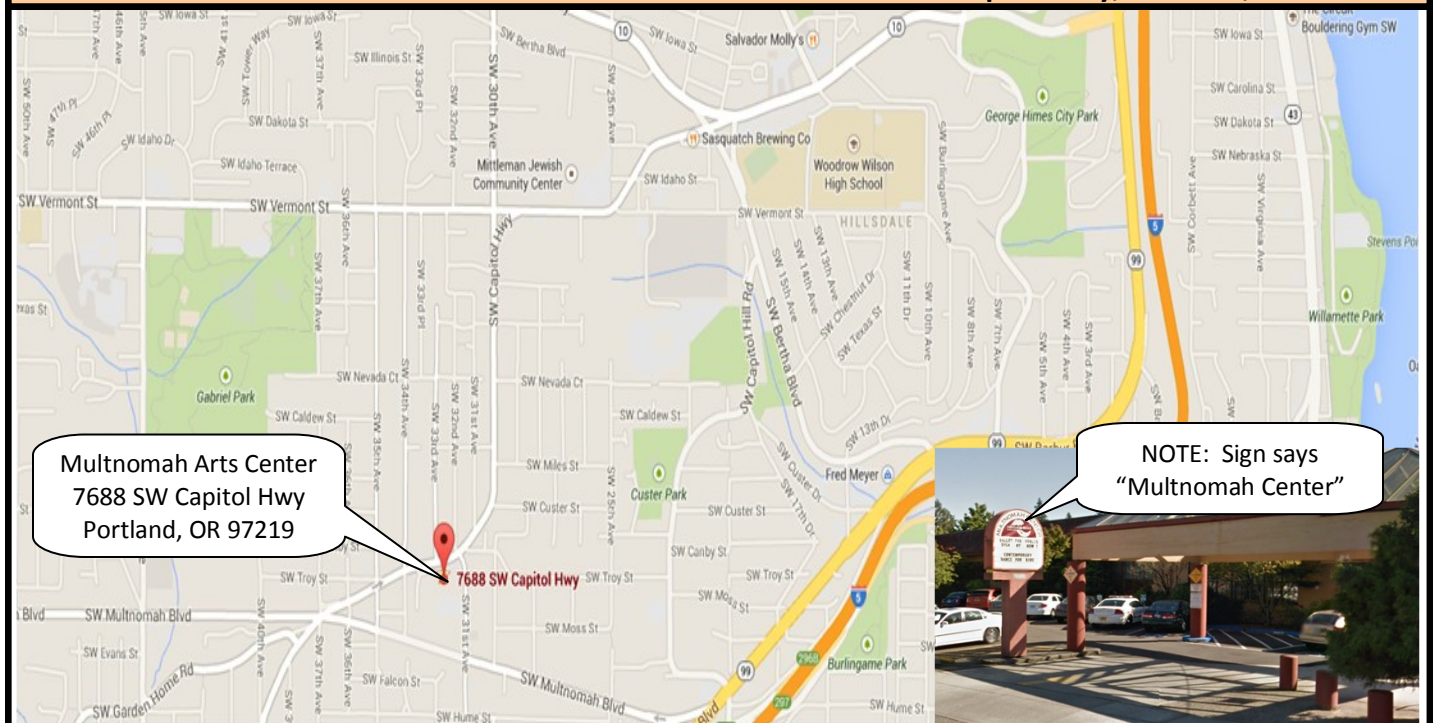
**1<sup>st</sup> Thursday at 7:00 PM**

**The Multnomah Arts Center, 7688 SW Capitol Hwy, Portland, OR 97219**

2016	Program	Challenge
Thursday, January 7	Annual Tool Swap Meet	none
Thursday, February 4	Dale Larson (From Tree to Bowl)	(postponed to March)
Thursday, March 3	Station demo night	Segmented Pieces and Multi-Axis Pieces
Thursday, April 7	Terry Gerros (Spirals)	Eggs
Thursday, May 5	TBA	Two-of-a-Kind (Matching Pieces)
Thursday, June 2	Steve Newberry (Ladles)	Hollow Forms
Thursday, July 7	TBA	Reassembled Bowls
Thursday, August 4	Annual Auction and Picnic	none
Thursday, September 1	Tom Hasting (Natural Edge Bowls)	Winged Bowls
Thursday, October 6	TBA	Carved or Textured Pieces
Thursday, November 3	Elections (No Show-n-Tell)	None (Elections)
Thursday, December 1	TBA	TBA

### MAP TO THE MULTNOMAH ARTS CENTER

**7688 SW Capitol Hwy, Portland, OR 97219**



## Other Woodturner Clubs 2016 Meetings and Programs

*Please visit the individual club websites to verify the information presented below.*

### **Cascade Woodturners (Portland, OR) ([www.cascadewoodturners.com](http://www.cascadewoodturners.com))**

3rd Thursday, 6:45 PM at the Willamette Carpenters Training Center,  
4222 NE 158th Ave., Portland, OR 97230

March 17: Dale Larson & Mike Meredith (Spheres & Threading)

April 21: Jim Piper

### **Willamette Valley Woodturners (Salem, OR) ([www.willamettevalleywoodturners.com](http://www.willamettevalleywoodturners.com))**

2nd Thursday, 6:30 PM at the Salem Center 50+, 2615 Portland Rd, NE Salem, OR 97303

March 10: Dan Tilden

April 14: Walter Thies

### **Beaver State Woodturners (Eugene, OR) ([www.beaverstatewoodturners.com](http://www.beaverstatewoodturners.com))**

4th Thursday, 6:00 PM at the Woodcraft Store, 1052 Green Acres Rd, Eugene, OR 97408

February 25: Rick Mower (Bangles and Bracelets)

March 24: TBA

April 28: TBA

### **Southwest Washington Woodturners (Vancouver, WA) ([www.southwestwashingtonwoodturners.com](http://www.southwestwashingtonwoodturners.com))**

4th Wednesday, 7:00 PM at The Friends of the Carpenter's Center, 1600 West 20th St, Vancouver, WA

February 24: Annual Tool Swap

March 23: TBA

### **Woodturners of Olympia (Olympia, WA) ([www.woodturnersofolympia.org](http://www.woodturnersofolympia.org))**

4th Thursday, 6:30 PM at the Thurston County Fairgrounds, Carpenter Road SE, Lacey, WA

February 25: Turning and Learning and Annual Tool Swap

March 24: TBA

## 2016 LOCAL EVENTS

### **From the Roots Up**

March 4-25, 2016

510 Museum &ARTspace, 510 1<sup>st</sup> Street, Lake Oswego, OR

Opening Reception: Friday, March 4, 5-7 PM

Gallery Hours: Tues-Fri, 11 AM – 4 PM

Featuring artwork from the Lake Area Artists and Pacific Northwest Woodturning Guild

Organized and curated by the Arts Council of Lake Oswego, [www.artscouncillo.org](http://www.artscouncillo.org)

### **6th Annual Gathering of the Guilds**

April 22-24, 2016

Oregon Convention Center

Free Admission; over 200 vendors, live music, daily artist demonstrations, raffles and gift certificate giveaways, a fashion show, family-friendly crafts and education.

### **19<sup>th</sup> Annual Art in the Pearl**

September 3-5, 2016

North Parks Blocks, Portland, Oregon

## 2016 NATIONAL SYMPOSIA

### **Desert Woodturning Roundup *presented by Arizona Woodturners Association***

February 26-28, 2016

Mesa, AZ

### **Idaho Artistry in Wood Show *at Southwest Idaho Woodturners Association***

February 27-28, 2016

Boise, ID

### **Honolulu Woodturners 7<sup>th</sup> Annual Symposium**

March 12-13, 2016

Honolulu, HI

### **Totally Turning 2016**

April 2-3, 2016

Saratoga Springs, NY

### **Dakota Woodturners Spring Symposium *at Dakota Woodturners***

April 22-24, 2016

Bismarck, ND

### **37<sup>th</sup> Annual Utah Woodturning Symposium**

May 12-14, 2016

Orem, UT

### **AAW 30<sup>th</sup> International Symposium**

June 9-12, 2015

Atlanta, GA

### **Turn-On! Chicago 2016**

July 22-24, 2016

Mundelein, IL

### **Saskatchewan Woodturning Symposium 2016**

July 22-24, 2016

Regina, SK

### **2016 Symposium and Workshops featuring Michael Hosaluk *presented by Woodturners of Olympia***

**July 23-27, 2016**

**Lacey, WA**

Symposium, Saturday, July 23, 2016, 7:50-5:00, Registration \$100 prior to June 1, \$120 after June 1

Workshops on July 24-27, 2016

Sunday, July 24, 2016: Basics of spindle work and making functional items. Cost \$150

Monday, July 25, 2016: Unique techniques for making and enhancing boxes and containers. Cost \$150

Tuesday & Wednesday, July 26 & 27, 2016: How to improve your work: tool use, surface enhancement, embellishment techniques. Cost \$250

For more information visit: <http://www.woodturnersofolympia.org/symposium-2016-details.html>

### **SWATurners 25<sup>th</sup> Anniversary Symposium**

August 26-28, 2016

Waco, TX

### **Mid-Atlantic Woodturners Association**

September 24-25

Lancaster, PA

### **5<sup>th</sup> Segmenting Symposium**

October 27-30, 2016

Quincy, MA

### **Virginia Woodturners (10 Clubs)**

November 5-6, 2016

Fishersville, VA



**LOCAL WOODWORKING STORE MARCH 2016 FREE DEMOS**

Date	Demo	Location	Time
03/05	Raised panel Door Construction	Rockler, Beaverton	11:00 AM
03/05	TBA	Woodcrafters, Portland	10:00 AM – 3:00 PM
03/12	SawStop Saws and Table Saw Techniques	Rockler, Beaverton	11:00 AM
03/12	TBA	Woodcrafters, Portland	10:00 AM – 3:00 PM
03/19	Full Spectrum Laser Demo	Rockler, Beaverton	11:00 AM
03/19	TBA	Woodcrafters, Portland	10:00 AM – 3:00 PM
03/26	Weekend Woodturning Projects	Rockler, Beaverton	11:00 AM
03/26	TBA	Woodcrafters, Portland	10:00 AM – 3:00 PM

Many other fine classes and demos are available from these local stores:

Rockler, Beaverton, 503-672-7266, <http://www.rockler.com/retail/stores/or/portland-store>

Woodcraft, Tigard, 503-684-1428, <http://www.woodcraft.com/stores/store.aspx?id=312>

Woodcrafters, Portland, 503-231-0226, <http://www.woodcrafters.us/>

**NWWT Company Store — Feb 2016 Price List**

<b><u>CA Glue</u></b> Very Thin                      2 oz                      \$6.00 Medium                        2 oz                      \$6.00 Black Medium                1 oz                      \$6.00 Thick                          2 oz                      \$6.00 Gel                              2 oz                      \$6.00 Micro Tips                    pkg 10                    \$3.00 Accelerator                   8 oz                      \$10.00			<b><u>Abranet</u></b> <b><u>Abranet 3" Sanding Disks</u></b> Grits = 80, 120, 180, 240, 320, 400, 600 <b>\$5.00 per pack of 7 discs</b> <b><u>Abranet 2 3/4" x 8" Sanding Sheets</u></b> Grits = 80, 120, 180, 240, 320, 400 <b>\$6.00 per pack of 6 sheets</b>		
<b><u>DVDs</u></b> <b>\$3.00 each, \$5.00 mailed</b>			<b><u>Klingspore 2" &amp; 3" Scalloped Discs</u></b> Grits = 80, 120, 180, 220, 320, 400 KLINGSPOR aluminum oxide stearate C-Weight Paper, non-loading <b>2" Discs: \$3.00 for pack of 10</b> <b>3" Discs: \$4.00 for pack of 10</b>		
<b><u>G2 Gel Pens</u></b> <i>Excellent for signing wood – does not smear or fade (apply to unfinished wood and let ink dry).</i> <b>\$1.00 each</b>			<b><u>Mirka Goldflex Soft Abrasive Pads</u></b> <i>The foam base is 'grip friendly' and the special stearate coating prevents clogging. Suitable for wet &amp; dry sanding.</i> Grits = 150, 240, 320, 400, 600 <b>50 Cents each, 3 for \$1.00</b> <b>\$5.00 for 3 of each Grit (15 total)</b>		
<b><u>Anchor Seal</u></b> <b>1 Gallon = \$15.00</b>			<b><u>Stop-Loss Bags</u></b> <i>A way to store finishing liquids to keep them from going bad.</i> <b>\$4.00 each, 3 for \$10.00</b>		
<b><u>NWWT Patches</u></b> <b>\$3.00 each</b> <b>2 for \$5.00</b> <b>5 for \$10.00</b>					

**DEALS  
AND  
SPECIALS**

BURLS  
SLABS  
LUMBER  
& TURNING  
BLANKS



**SPRING  
OPEN  
HOUSE  
& WAREHOUSE  
SALE**

**NORTH WOODS FIGURED WOOD**

**Saturday  
March 12th  
9-5**



**WOOD  
TURNING DEMO  
BY  
MIKE MERIDITH**



**Chocolate  
tasting**

The Bard's Chocolate

**56752 SW  
Sain Creek Rd  
Gaston OR 97119  
503-357-9953**

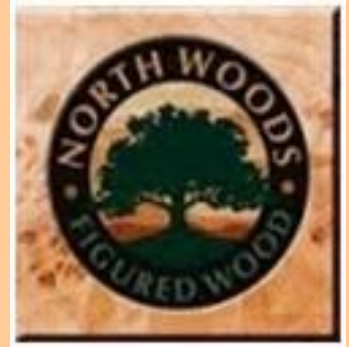
## Norfolk Island Pine Available from North Woods!

Norfolk Island Pine (NIP) is endemic to Norfolk Island, which is located east off the coast of Australia. It is also known as the living Christmas tree, because of its triangular shape. However, it is not actually a true pine. It's excellent for wood-turning, and many artisans use it to make lampshades, which when lit, can give off a unique reddish-orange glow.

Large numbers of Norfolk Island Pine are grown in Florida for the houseplant industry. You'll often see young specimens potted as mini Christmas trees around the holidays. In fact, the Norfolk Island Pine that we have for sale comes from Florida. Some areas in the Southwest and Florida prohibit planting of NIP since it is prone to getting struck by lightning and falling. Interestingly enough, some of the NIP that we have for sale was in fact struck by lightning!

Heartwood is light brown, sometimes with a yellow or red hue. Paler sapwood isn't clearly defined. It is sometimes afflicted with blue/gray fungal staining, particularly if not dried properly. In certain applications this staining is considered decorative, particularly when the wood also features contrasting reddish knots.

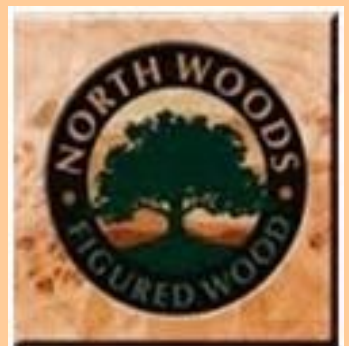
This wood is easy to work with, though knots can predictably cause uneven sanding and other issues. Its common uses typically are for plywood, furniture, turning stock and other specialty wood projects.



North Woods, LLC  
56752 SW Sain Creek Rd  
Gaston OR 97116  
800-556-3106, 503-357-9953  
[www.nwfiguredwoods.com](http://www.nwfiguredwoods.com)

## North Woods is *buying* Maple Burl!

If you have a tree coming down, contact North Woods, LLC at 800-556-3106, 503-357-9953, or [service@nwfiguredwoods.com](mailto:service@nwfiguredwoods.com).





**FOR SALE BULLETIN BOARD**

# For Sale

DELTA 46-715  
**14-Inch Woodworking Lathe**  
 3/4-Horsepower • 110-120-Volt • Variable Speed



**\$700** **Cash**

Heavy Duty 14" Wood Lathe.  
 Brand: Delta.  
 Model: 46-715.

**This lathe was bought new but has never been used.**

It is a big capacity lathe designed for industry, commercial shops and schools (but home handymen would love it too!) Cast iron bed.

The owner's manual and a set of new lathe tools are included.

- Delta 3/4-horsepower lathe includes 10 speeds to suit your projects
- Head stock rotates at 45, 90, and 180 degree angles
- 24-position index on pulley allows you to create ornamental detailing
- Includes a cast-iron tool rest measuring 12 inches, a convenient on/off switch positioned above the motor, and a durable steel stand
- Measures 62.6" by 22.4" by 18.4"; weighs 338 pounds

**Pick up is in Banks area. Cash on pick-up is fine.**

Please email and include your mobile phone number, and an indication of when you could pick this up. If you are reading this ad, then the item is still available.

**Contact:**

**Email: [windfalldesigns@comcast.net](mailto:windfalldesigns@comcast.net)**

**Phone: 503-704-6976**



## OUR BUSINESS PARTNERS

We encourage our Northwest Woodturners members to visit these business partners to find the many great products they carry and to stock up on the necessary items for your wood turning needs.

Be sure to remind the sales clerk that you are a member of Northwest Woodturners! Our business partners provide NWWT with generous gifts based on member purchases.






**NORTH WOODS**  
FIGURED WOOD

Burl • Turning blanks  
Slabs • Lumber

**15% Off**  
online orders  
—use—  
WOODTURNERS  
coupon code at checkout

[www.nwfiguredwoods.com](http://www.nwfiguredwoods.com)  
(800) 556-3106



**Doctor's Woodshop LLC**

**Woodturning Finishes**  
[doctorswoodshop.com](http://doctorswoodshop.com)

**WOODCRAFT®**  
Helping You Make Wood Work®

**Hours**  
Sunday 9am-5pm • Monday 9am-7pm • Tuesday 9am-7pm  
Wednesday 9am-7pm • Thursday 9am-9pm • Friday 9am-7pm  
Saturday 9am-6pm

---

Independently Owned & Operated Franchise  
12020 SW Main Street  
Tigard, OR 97223

Phone: (503) 684-1428  
Toll Free: (866) 684-1428  
Fax: (888) 312-9663  
[woodcraft312@woodcraftportland.com](mailto:woodcraft312@woodcraftportland.com)



**ROCKLER®**  
WOODWORKING AND HARDWARE

---

Create with Confidence™

**10% off non-sale items for club members**  
(excludes power tools, Leigh and Porter-Cable dovetail jigs, CNC Shark)

11773 SW Beaverton-Hillsdale Hwy, Beaverton, OR 97005  
(503)672-7266 [store17@rockler.com](mailto:store17@rockler.com)

Delta, JET, and Powermatic lathes, turning tools, turning stock, turning kits, abrasives, finishes, plus a whole lot more!

## THANK OUR BUSINESS PARTNERS

Here's a suggestion: When you get home from purchasing a treasured item from one of our business partners who gave you a discount because you are a member of NWWT, take a moment and contact them via their web site or an e-mail and thank them for supporting NWWT.

**EDITOR'S NOTES**

All Newsletters can be accessed from the NWWT website [www.northwestwoodturners.com](http://www.northwestwoodturners.com). If you do not have internet access, provide me with your mailing address and newsletters will be sent via USPS.

If you do not receive a courtesy email from me by the beginning of the month indicating that a new newsletter is available on line, please send me your current email address.

**Submissions to the newsletter are due by the last Thursday of the month.** Articles, tips, web links, classified ads, or other woodturning-related items are welcome.

Jim Schoeffel  
503-591-9066  
jschoeffel@aol.com

For other business inquiries contact Northwest Woodturners at:  
Northwest Woodturners, P.O Box 1157, Lake Oswego, OR 97035

*Membership has benefits! Show your NWWT Membership Card to receive a discount off your purchase at Gilmer Wood, Rockler, Woodcraft, Woodcrafters, North Woods, and Crosscut Hardwoods.*



Northwest  
Woodturners  
P.O. Box 1157  
Lake Oswego OR 97035